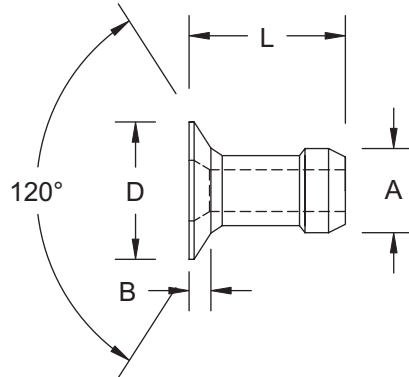


# ZipRiv™ Countersunk Head



Extensively used in sheet metal fabrication, ZipRiv™ offers a high clamp up to steel, brass, aluminum and plastic substrates. The Zipriv™ can be identified by its bulge towards the tail of the rivet. Offered in Dome or Countersunk Head Styles; Steel, Aluminum, Brass and Stainless Steel Materials with zinc clear, zinc black and black anodized finishes.



Other Head Styles  
Available Upon Request

## Inch Standard

"A"	Part Number	Grip Range	Length	"D"	"B"	Hole Size	Pcs Per Pod
1/8"	[ ]CZ-0405	.050 - .090	.170				65
	[ ]CZ-0406	.060 - .110	.172				64
	[ ]CZ-0407	.100 - .150	.212	.235	.035	.1315	52
	[ ]CZ-0408	.140 - .190	.252	.200	.023	.1285	44
	[ ]CZ-0410	.180 - .230	.292				38
	[ ]CZ-0411	.220 - .270	.332				33
5/32"	[ ]CZ-0505	.062 - .115	.204				59
	[ ]CZ-0506	.085 - .135	.224				54
	[ ]CZ-0507	.105 - .155	.244	.274	.040	.1592	49
	[ ]CZ-0509	.145 - .195	.284	.239	.028	.1562	42
	[ ]CZ-0511	.185 - .235	.324				36
	[ ]CZ-0513	.225 - .275	.364				32
3/16"	Available Upon Request						

Material	Part# Prefix	1/8"		5/32"		3/16"	
Aluminum	A [ ]	700 N	1300 N	1100 N	1700 N	-	-
Steel	S [ ]	900 N	1600 N	1600 N	2800 N	-	-
Brass	B [ ]	Available Upon Request					
Stainless Steel	F [ ]	Available Upon Request					
		Shear	Tension	Shear	Tension	Shear	Tension
TYPICAL PERFORMANCE SPECIFICATIONS							

