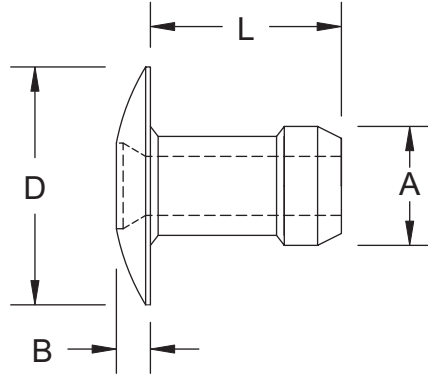


Extensively used in sheet metal fabrication, ZipRiv™ offers a high clamp up to steel, brass, aluminum and plastic substrates. The Zipriv™ can be identified by its bulge towards the tail of the rivet. Offered in Dome or Countersunk Head Styles; Steel, Aluminum, Brass and Stainless Steel Materials with zinc clear, zinc black and black anodized finishes.



Other Head Styles
Available Upon Request

Inch Standard

"A"	Part Number	Grip Range	Length	"D"	"B"	Hole Size	Pcs Per Pod
1/8"	[]DZ-0404	.045 - .095	.169				58
	[]DZ-0406	.085 - .135	.209				48
	[]DZ-0408	.125 - .175	.248	.257	.125	.1315	42
	[]DZ-0410	.165 - .215	.287	.233	.120	.1285	37
	[]DZ-0412	.215 - .255	.327				33
	[]DZ-0414	.245 - .295	.366				30
5/32"	[]DZ-0505	.062 - .115	.192				52
	[]DZ-0507	.105 - .155	.232				44
	[]DZ-0509	.145 - .195	.272	.322	.154	.1592	38
	[]DZ-0511	.185 - .235	.311	.298	.150	.1562	34
	[]DZ-0513	.225 - .275	.350				30
	[]DZ-0607	.080 - .155	.240				42
3/16"	[]DZ-0609	.145 - .205	.287				36
	[]DZ-0611	.195 - .255	.339	.382	.189	.1940	31
	[]DZ-0613	.245 - .305	.390	.358	.184	.1910	28
	[]DZ-0615	.295 - .355	.437				24

Material	Part# Prefix	1/8"		5/32"		3/16"	
Aluminum	A []	756 N	1312 N	1134 N	1734 N	1512 N	2735 N
Steel	S []	1134 N	1823 N	1645 N	2802 N	2246 N	3713 N
Brass	B []	1112 N	1912 N	1868 N	2757 N	2312 N	2602 N
Stainless Steel	F []	1300 N	2000 N	2446 N	3558 N	3558 N	5114 N
		Shear	Tension	Shear	Tension	Shear	Tension
TYPICAL PERFORMANCE SPECIFICATIONS							

