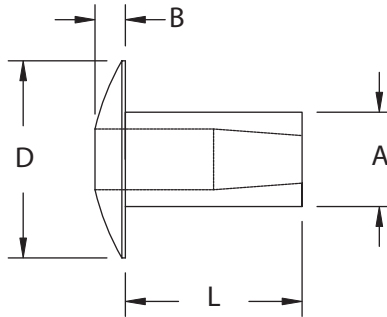


# ZipSho™ Dome Head



Typically used in soft or brittle materials, ZipSho™ is designed for fastening applications that may be sensitive to excess clamping force and shock. ZipSho™ assembles materials such as acrylic, plastic, vinyl, rubber, wood or brittle metals that can crack or break under extreme clamping pressure. An internally tapered hole causes controlled radial expansion of the tail which firmly fastens without adversely affecting the riveted substrates.



Other Head Styles  
Available Upon Request

## Inch Standard

"A"	Part Number	Grip Range	Length	"D"	"B"	Hole Size	Pcs Per Pod
1/8"	[ ]DZS-0404	.000 - .062	.125				71
	[ ]DZS-0406	.062 - .125	.187				51
	[ ]DZS-0408	.125 - .187	.250	.217	.045	.132	39
	[ ]DZS-0410	.187 - .250	.312	.193	.033	.129	32
	[ ]DZS-0412	.250 - .312	.375				27
	[ ]DZS-0414	.312 - .375	.437				23
5/32"	[ ]DZS-0506	.062 - .125	.187				47
	[ ]DZS-0508	.125 - .187	.250				38
	[ ]DZS-0510	.187 - .250	.312	.257	.057	.164	31
	[ ]DZS-0512	.250 - .312	.375	.235	.047	.161	27
	[ ]DZS-0514	.312 - .375	.437				23
3/16"	[ ]DZS-0607	.062 - .125	.291				38
	[ ]DZS-0609	.125 - .187	.281				33
	[ ]DZS-0611	.187 - .250	.344	.349	.070	.194	28
	[ ]DZS-0613	.250 - .312	.409	.329	.060	.191	24
	[ ]DZS-0615	.312 - .375	.479				21

### Other Sizes Available Upon Request

Material	Part# Prefix	1/8"		5/32"		3/16"	
Aluminum	A [ ]	623 N	1000 N	979 N	1624 N	1423 N	2291 N
Steel	S [ ]	1148 N	1660 N	1926 N	2891 N	2615 N	3790 N
Brass	B [ ]	1289 N	-	-	-	-	-
Stainless Steel	F [ ]	Available Upon Request					
		Shear	Tension	Shear	Tension	Shear	Tension
TYPICAL PERFORMANCE SPECIFICATIONS							

