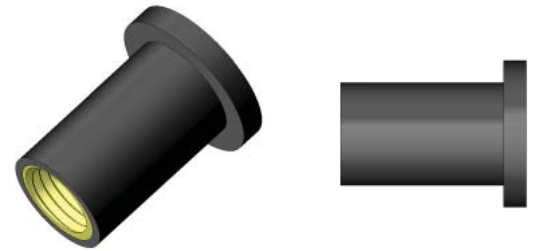


# JF SERIES™ - JK NUT AMERICAN STANDARD

The RivetKing IRL Series is a heavywall/thickwall Rivetnut. This robust design upgrades the thickness of both the body and the head height. The robust IRL series offers higher pullout resistance and increased endurance of the joint and assembly. Spin-Pull tools are recommended for installation.



IRL SERIES



PART CODE	THREAD SIZE (INCH)	GRIP CODE	GRIP RANGE	LENGTH Ref.	HEAD DIA Ref.	HEAD HEIGHT Ref.	BODY DIA. Ref.	HOLE SIZE +.002/- .000
JF-3100	6-32 UNC	#1	.015 - .156	.499	.452	.062	.312	.312
JF-3250	6-32 UNC	#2	.375 - .607	.981	.554	.035	.240	.250
JF-4100	8-32 UNC	#1	.015 - .156	.499	.438	.052	.312	.312
JF-4140	8-32 UNC	#2	.015 - .172	.560	.750	.060	.312	.312
JF-5150	10-32 UNF	#1	.015 - .192	.554	.500	.036	.377	.377
JF-5170	10-32 UNF	#2	.035 - .232	.665	.562	.040	.377	.377
JF-5190	10-32 UNF	#3	.030 - .227	.807	.750	.187	.377	.377
JF-5250	1/4-20 UNC	#1	.015 - .111	.630	.630	.051	.500	.500
JF-6200	1/4-20 UNC	#2	.031 - .187	.831	.740	.187	.500	.500
JF-6250	1/4-20 UNC	#3	.250 - .457	1.051	.635	.051	.500	.500
JF-8200	5/16-18 UNC	#1	.016 - .156	.725	.875	.125	.562	.562
JF-8250	5/16-18 UNC	#2	.156 - .375	1.100	.875	.225	.562	.562
JF-1027	3/8-16 UNC	#2	.015 - .437	1.062	1.250	.187	.750	.750

PART CODE	THREAD SIZE (INCH)	GRIP CODE	GRIP RANGE	LENGTH Ref.	HEAD DIA Ref.	HEAD HEIGHT Ref.	BODY DIA. Ref.	HOLE SIZE +.10/- .000
JF-3100M	6-32 UNC	#1	0.40 - 4.00	12.60	11.00	1.40	7.90	7.90
JF-3250M	6-32 UNC	#2	9.50 - 15.40	24.90	14.00	.90	6.10	6.10
JF-4100M	8-32 UNC	#1	0.40 - 4.00	12.60	11.00	1.40	7.90	7.90
JF-4140M	8-32 UNC	#2	0.40 - 4.40	14.20	19.05	1.50	7.90	7.90
JF-5150M	10-32 UNF	#1	0.40 - 4.90	14.10	12.70	0.90	9.60	9.60
JF-5170M	10-32 UNF	#2	0.85 - 5.90	17.00	14.00	1.00	9.60	9.60
JF-5190M	10-32 UNF	#3	0.80 - 5.80	20.95	18.95	4.40	9.60	9.60
JF-5250M	1/4-20 UNC	#1	7.90 - 16.00	26.50	14.00	1.30	9.60	9.60
JF-6200M	1/4-20 UNC	#2	0.80 - 4.70	21.10	19.05	4.75	12.70	12.70
JF-6250M	1/4-20 UNC	#3	6.40 - 11.50	26.70	16.30	2.00	12.70	12.70
JF-8200M	5/16-18 UNC	#1	0.40 - 4.00	18.30	21.50	3.20	15.90	15.90
JF-8250M	5/16-18 UNC	#2	3.95 - 9.50	27.90	21.50	5.70	15.90	15.90
JF-1027M	3/8-16 UNC	#2	0.38 - 11.10	27.00	29.50	4.75	19.05	19.05

**THE PART NUMBER IS COMPLETE BY ADDING THE MATERIAL AND FINISH CODES AS A SUFFIX TO THE PART CODE:**

**MATERIAL/FINISH CODES:** NO SUFFIX = Brass/Neoprene †  
 BE = Brass/EPDM  
 3N = Stainless/Neoprene  
 3E = Stainless/EPDM

**EXAMPLE:**  
 Part Code JF-3100 in Brass/Neoprene is...  
 JK-0401

† Indicates stocked configurations

R I V E T



K I N G®

1-800-BUY-RIVET